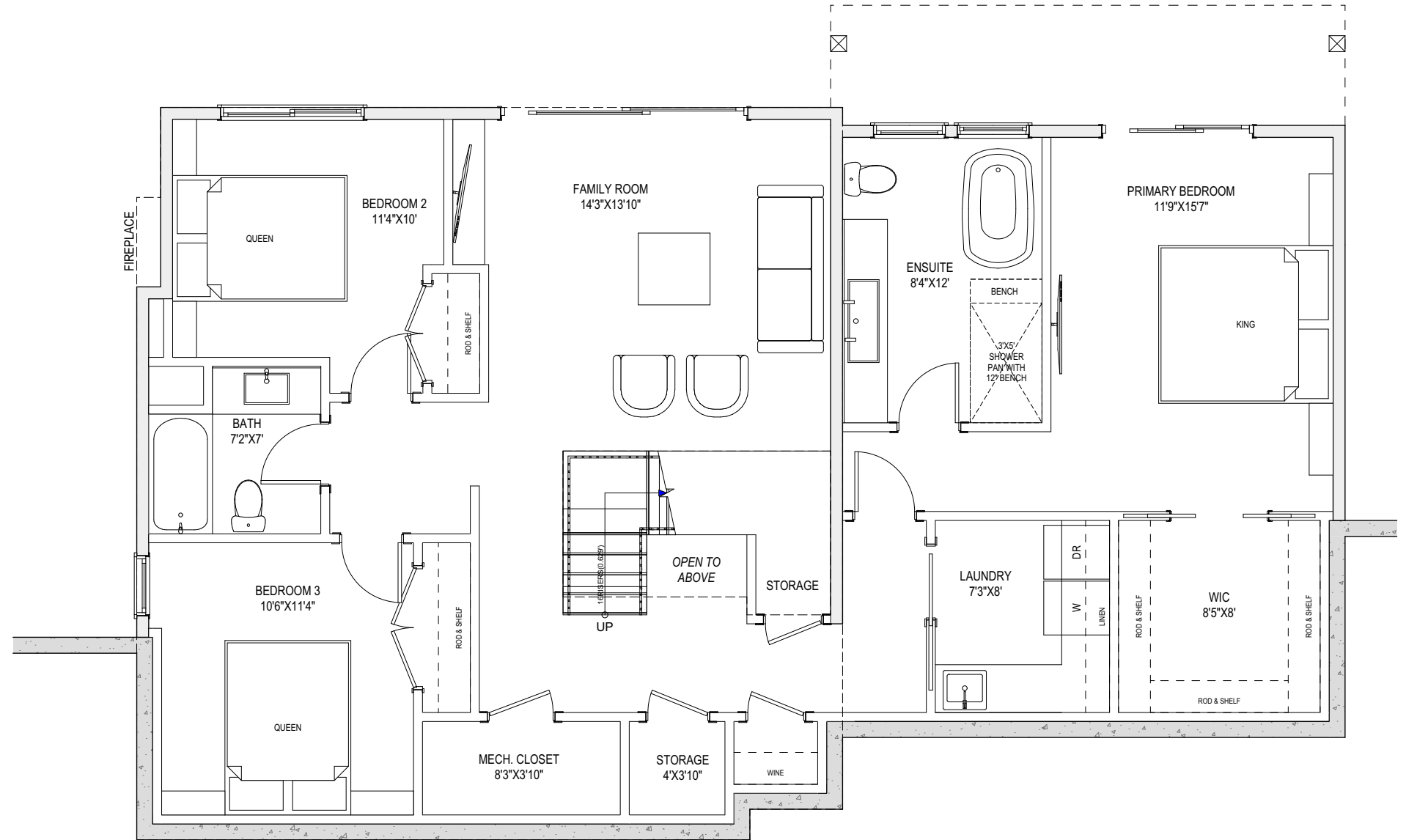


THE HEIGHTS

3632 AUTUMN LANE
'Stanley' SL15



LIVING AREA

TOTAL LIVING AREA: 2,241 sq ft

OTHER

GARAGE: 443 sq ft

MECHANICAL ROOM: 32 sq ft

LOWER FLOOR

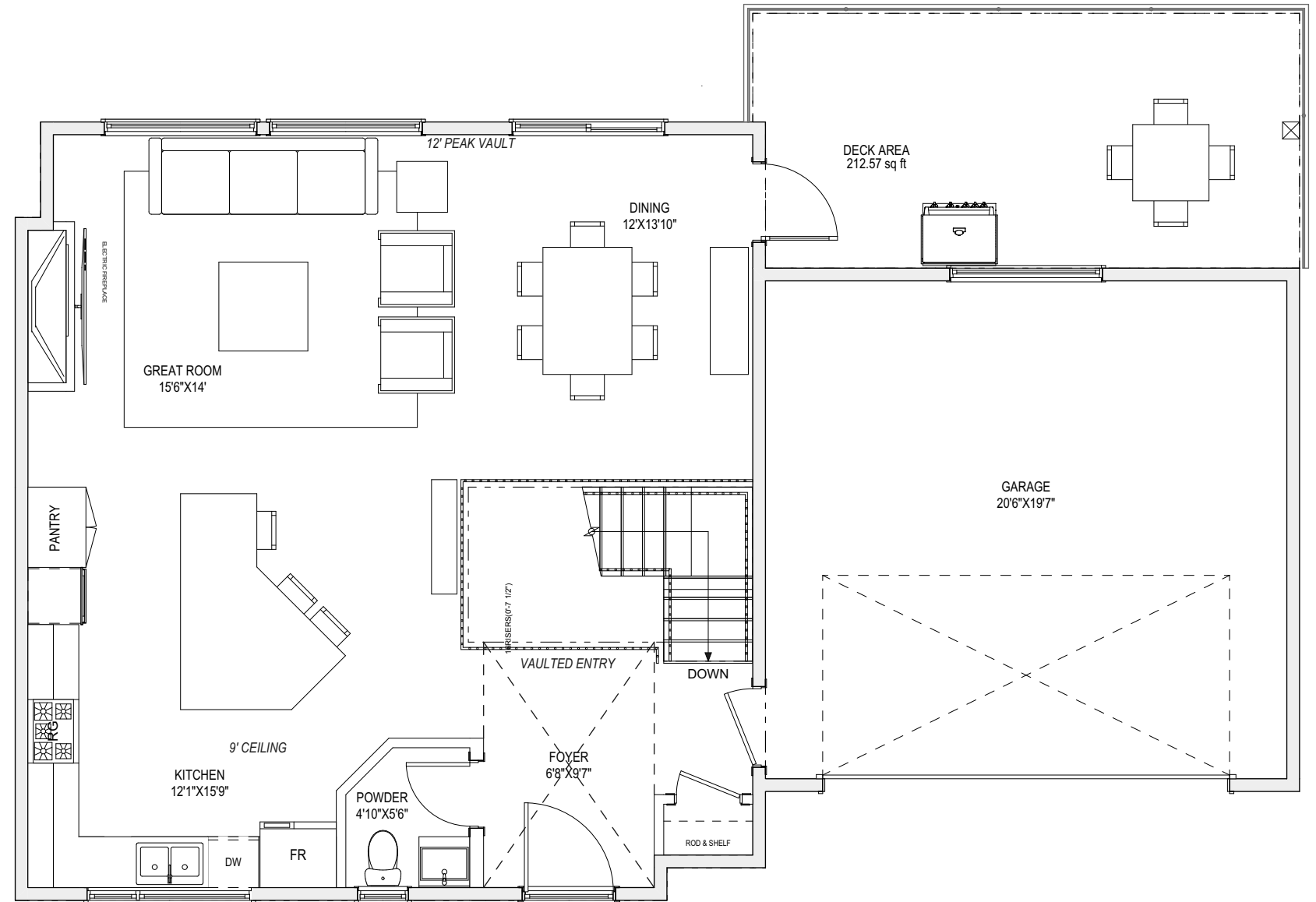
TOTAL LOWER FLOOR: 1,428 sq ft

Initials			
Seller	Seller	Buyer	Buyer

**NOTE: In the interest of maintaining high standards, the builder reserves the right to modify plans, specifications and design without prior notice. Drawings contained within are artist renderings only. Sizes and dimensions are approximate and may vary with actual plan and survey. Exterior style may change pending municipal approval.*

THE HEIGHTS

3632 AUTUMN LANE
'Stanley' SL15



LIVING AREA

TOTAL LIVING AREA: 2,241 sq ft

OTHER

GARAGE: 443 sq ft

MECHANICAL ROOM: 32 sq ft

MAIN FLOOR

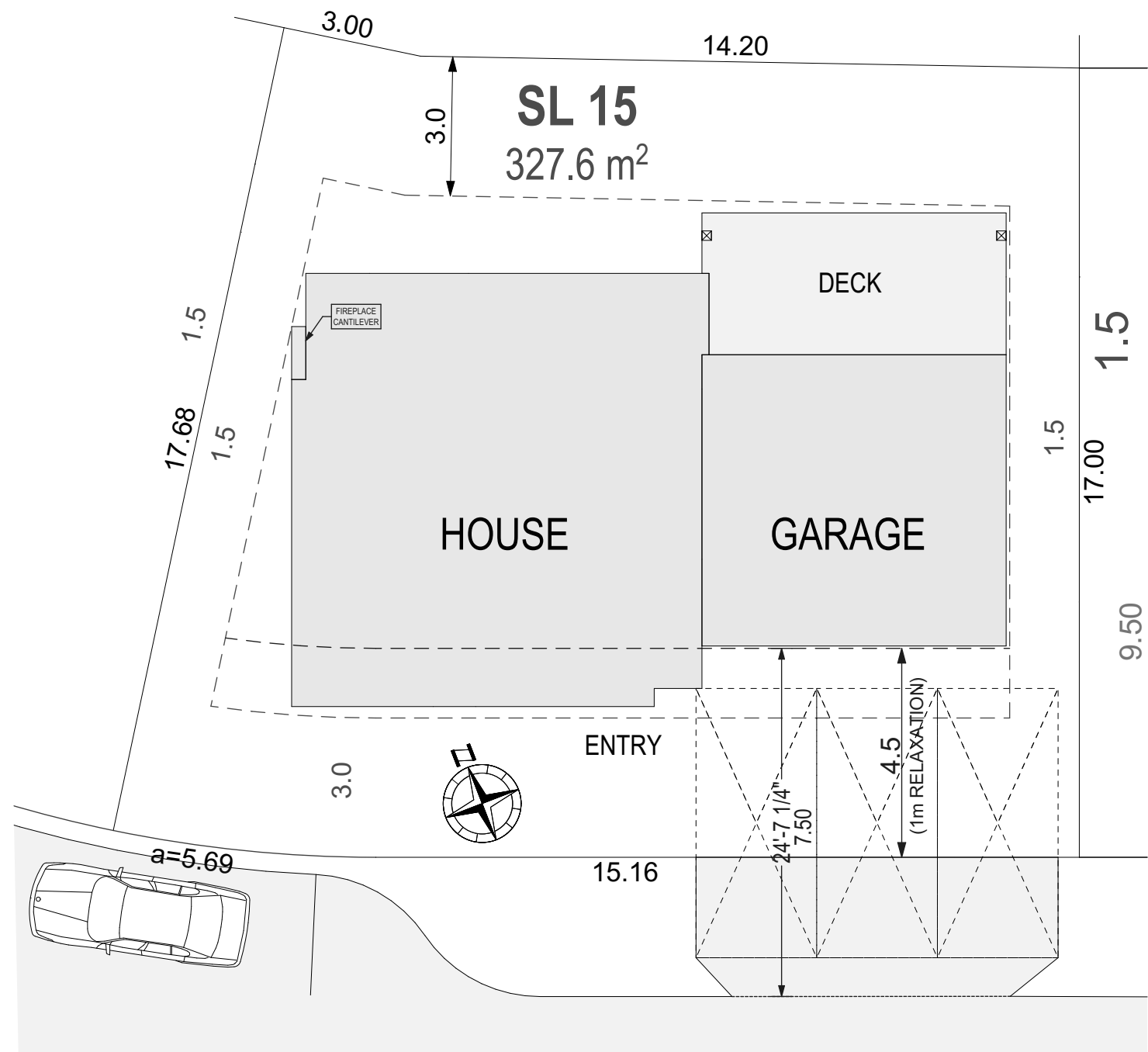
TOTAL MAIN FLOOR: 813 sq ft

Initials			
Seller	Seller	Buyer	Buyer

**NOTE: In the interest of maintaining high standards, the builder reserves the right to modify plans, specifications and design without prior notice. Drawings contained within are artist renderings only. Sizes and dimensions are approximate and may vary with actual plan and survey. Exterior style may change pending municipal approval.*

THE HEIGHTS

3632 AUTUMN LANE
'Stanley' SL15



Initials			
Seller	Seller	Buyer	Buyer

**NOTE: In the interest of maintaining high standards, the builder reserves the right to modify plans, specifications and design without prior notice. Drawings contained within are artist renderings only. Sizes and dimensions are approximate and may vary with actual plan and survey. Exterior style may change pending municipal approval.*