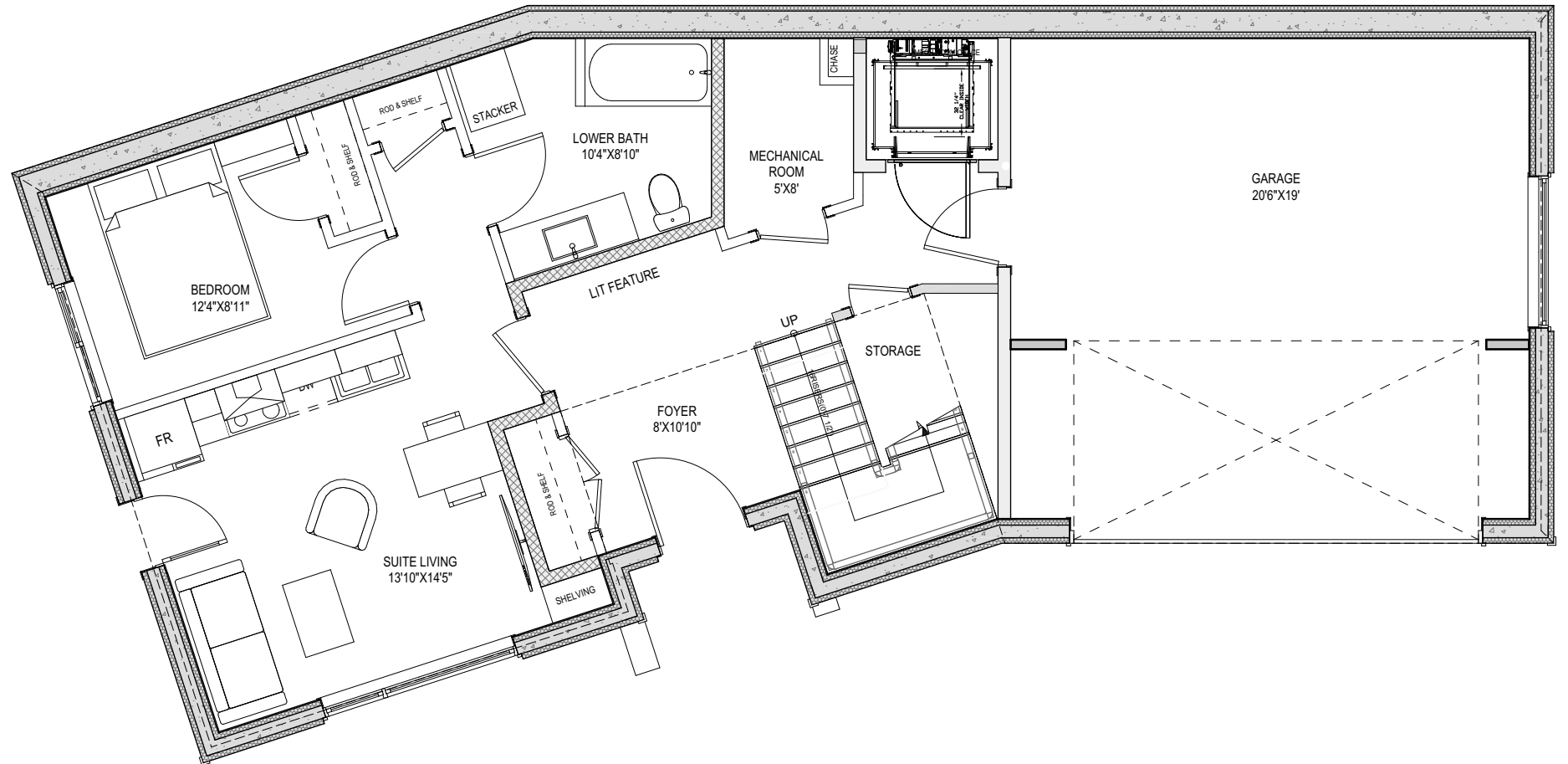


# THE HEIGHTS

769 BOULDER PLACE  
'Grayson' SL9



## LIVING AREA

TOTAL LIVING AREA: 3,396 sq ft

## OTHER

GARAGE: 467 sq ft  
MECHANICAL ROOM: 34 sq ft

## MAIN FLOOR

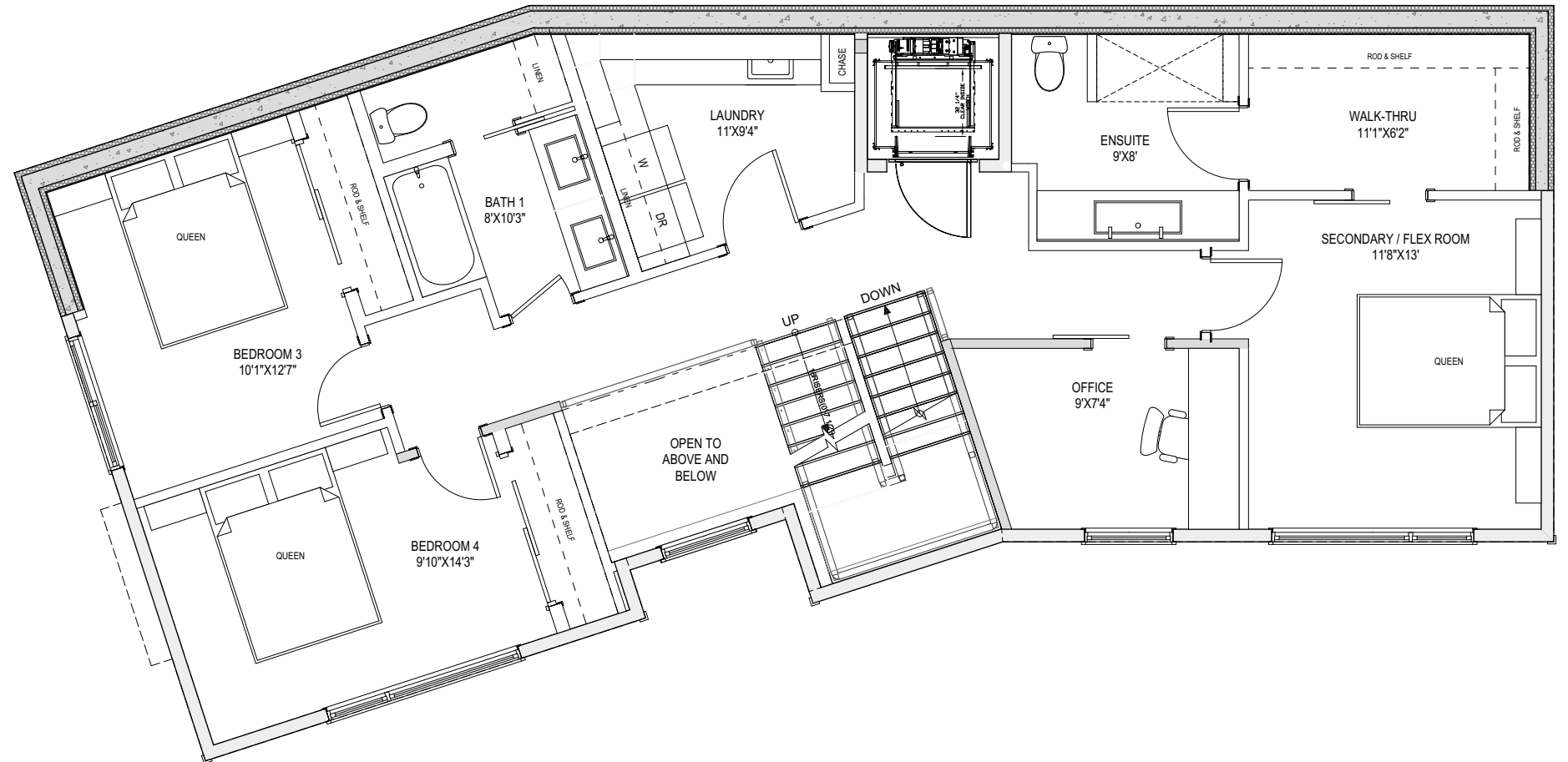
HOUSE MAIN FLOOR: 338 sq ft  
SECONDARY SUITE: 512 sq ft  
TOTAL MAIN FLOOR: 850 sq ft  
GARAGE: 467 sq ft

Initials			
Seller	Seller	Buyer	Buyer

*\*NOTE: In the interest of maintaining high standards, the builder reserves the right to modify plans, specifications and design without prior notice. Drawings contained within are artist renderings only. Sizes and dimensions are approximate and may vary with actual plan and survey. Exterior style may change pending municipal approval.*

# THE HEIGHTS

769 BOULDER PLACE  
'Grayson' SL9



## LIVING AREA

TOTAL LIVING AREA: 3,396 sq ft

## OTHER

GARAGE: 467 sq ft

MECHANICAL ROOM: 34 sq ft

## MIDDLE FLOOR

TOTAL MIDDLE FLOOR: 1,266 sq ft

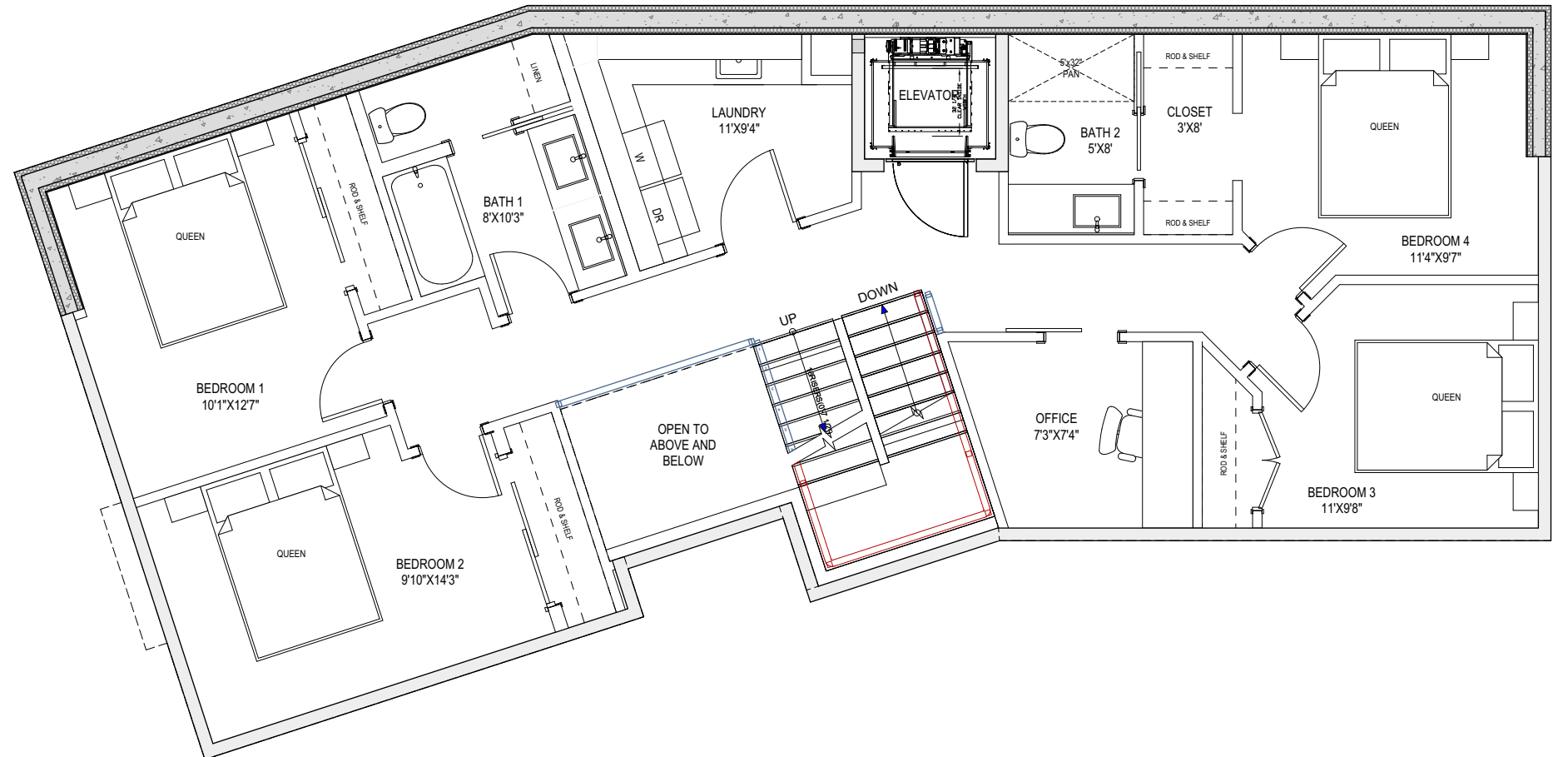
Initials			
Seller	Seller	Buyer	Buyer

*\*NOTE: In the interest of maintaining high standards, the builder reserves the right to modify plans, specifications and design without prior notice. Drawings contained within are artist renderings only. Sizes and dimensions are approximate and may vary with actual plan and survey. Exterior style may change pending municipal approval.*



# THE HEIGHTS

769 BOULDER PLACE  
'Grayson' SL9



## LIVING AREA

TOTAL LIVING AREA: 3,396 sq ft

## OTHER

GARAGE: 467 sq ft

MECHANICAL ROOM: 34 sq ft

## MIDDLE FLOOR - OPTION 2

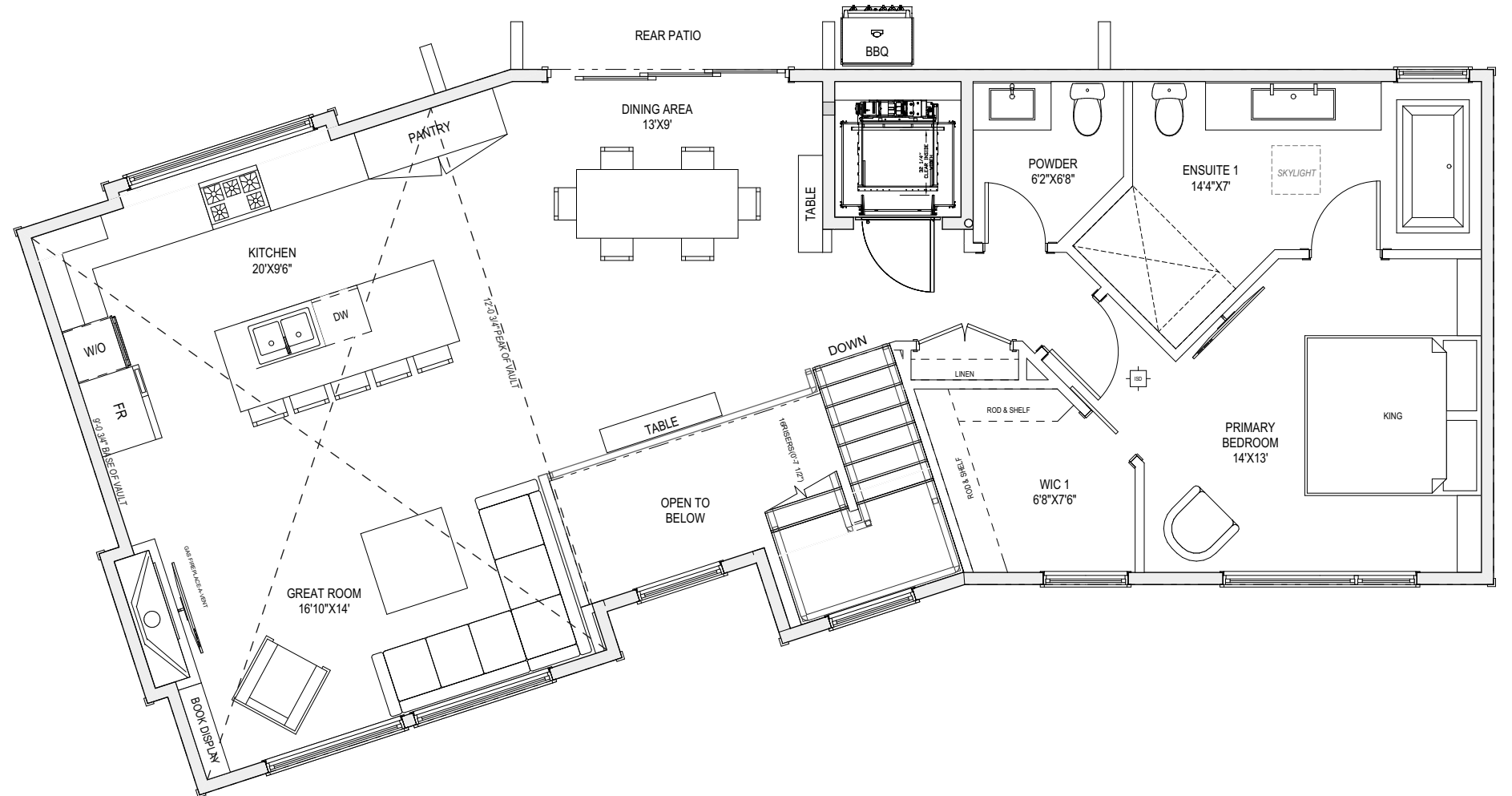
TOTAL MIDDLE FLOOR: 1,266 sq ft

Initials			
Seller	Seller	Buyer	Buyer

*\*NOTE: In the interest of maintaining high standards, the builder reserves the right to modify plans, specifications and design without prior notice. Drawings contained within are artist renderings only. Sizes and dimensions are approximate and may vary with actual plan and survey. Exterior style may change pending municipal approval.*

# THE HEIGHTS

769 BOULDER PLACE  
'Grayson' SL9



## LIVING AREA

TOTAL LIVING AREA: 3,396 sq ft

## OTHER

GARAGE: 467 sq ft

MECHANICAL ROOM: 34 sq ft

## UPPER FLOOR

TOTAL UPPER FLOOR: 1,280 sq ft

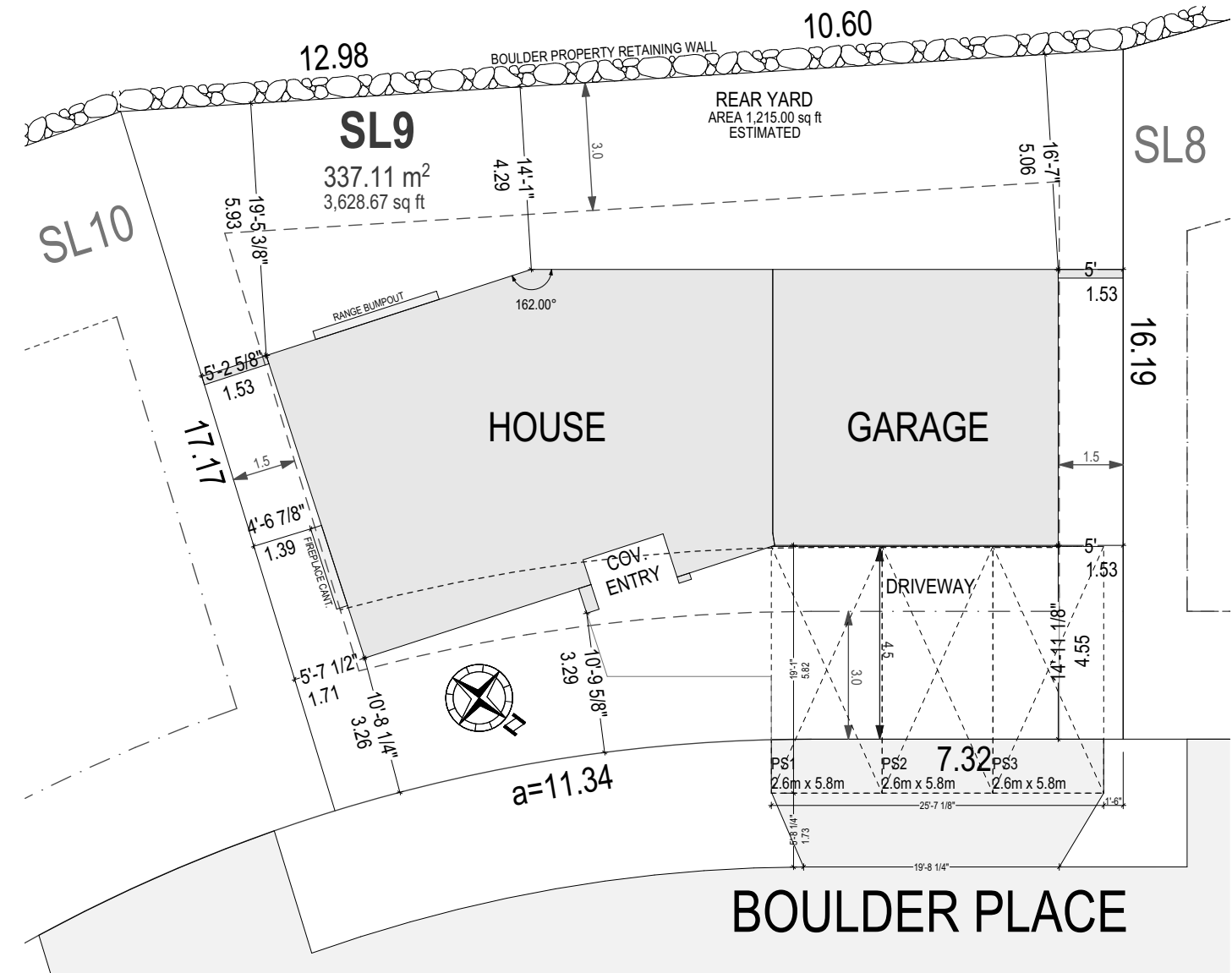
Initials			
Seller	Seller	Buyer	Buyer

*\*NOTE: In the interest of maintaining high standards, the builder reserves the right to modify plans, specifications and design without prior notice. Drawings contained within are artist renderings only. Sizes and dimensions are approximate and may vary with actual plan and survey. Exterior style may change pending municipal approval.*



# THE HEIGHTS

## 769 BOULDER PLACE 'Grayson' SL9



### LIVING AREA

TOTAL LIVING AREA: 3,396 sq ft

### OTHER

GARAGE: 467 sq ft

MECHANICAL ROOM: 34 sq ft

Initials			
Seller	Seller	Buyer	Buyer

*\*NOTE: In the interest of maintaining high standards, the builder reserves the right to modify plans, specifications and design without prior notice. Drawings contained within are artist renderings only. Sizes and dimensions are approximate and may vary with actual plan and survey. Exterior style may change pending municipal approval.*