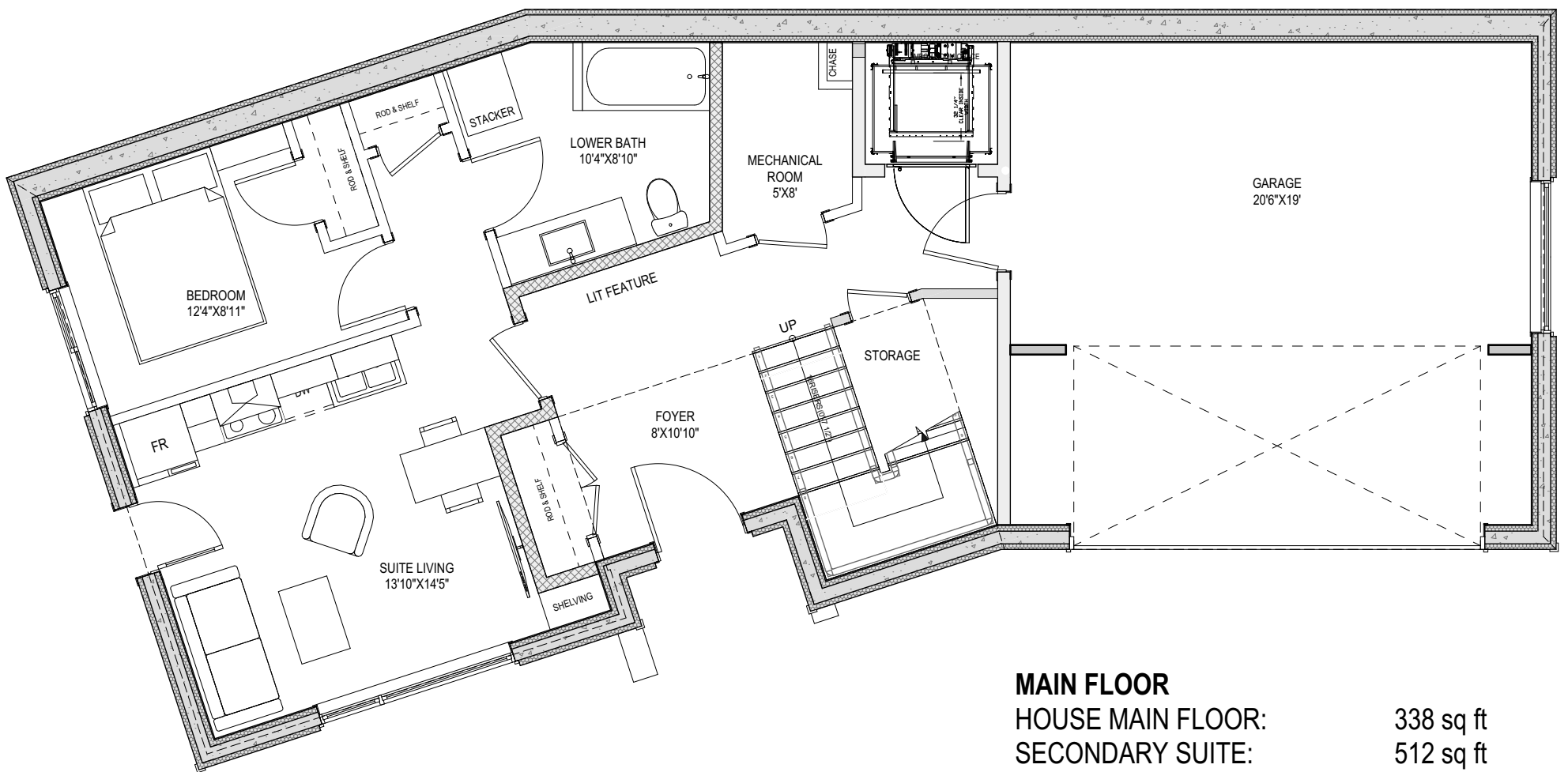




THE HEIGHTS

769 BOULDER PLACE
'Grayson' SL9



MAIN FLOOR

HOUSE MAIN FLOOR:	338 sq ft
SECONDARY SUITE:	512 sq ft
TOTAL MAIN FLOOR:	850 sq ft
GARAGE:	467 sq ft

LIVING AREA

TOTAL LIVING AREA: 3,396 sq ft

OTHER

GARAGE: 467 sq ft
MECHANICAL ROOM: 34 sq ft

Initials			
Seller	Seller	Buyer	Buyer

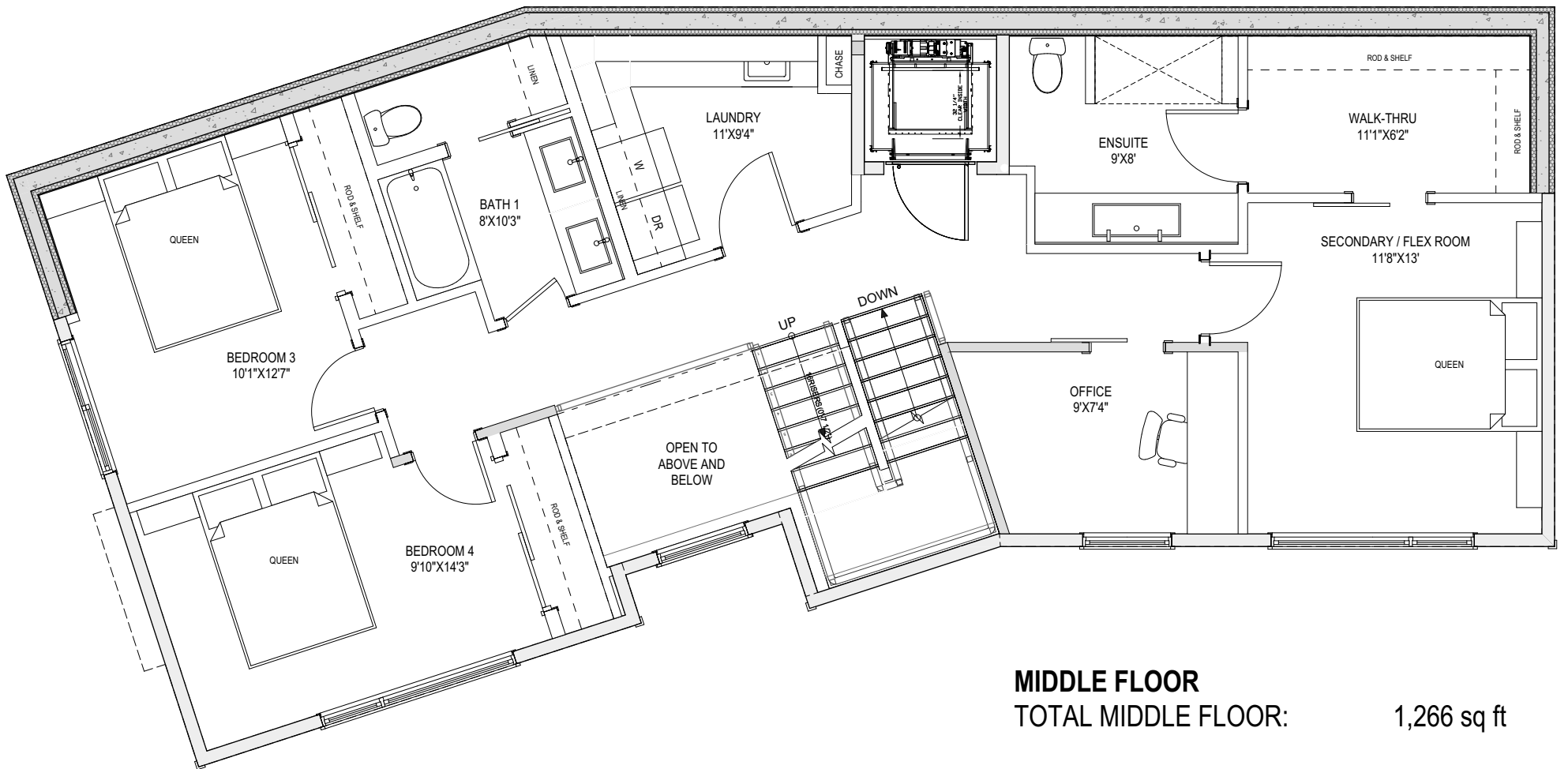
**NOTE: In the interest of maintaining high standards, the builder reserves the right to modify plans, specifications and design without prior notice. Drawings contained within are artist renderings only. Sizes and dimensions are approximate and may vary with actual plan and survey. Exterior style may change pending municipal approval.*



© 2024 CARMA DESIGN GROUP INC.

THE HEIGHTS

769 BOULDER PLACE
'Grayson' SL9



LIVING AREA

TOTAL LIVING AREA: 3,396 sq ft

OTHER

GARAGE: 467 sq ft

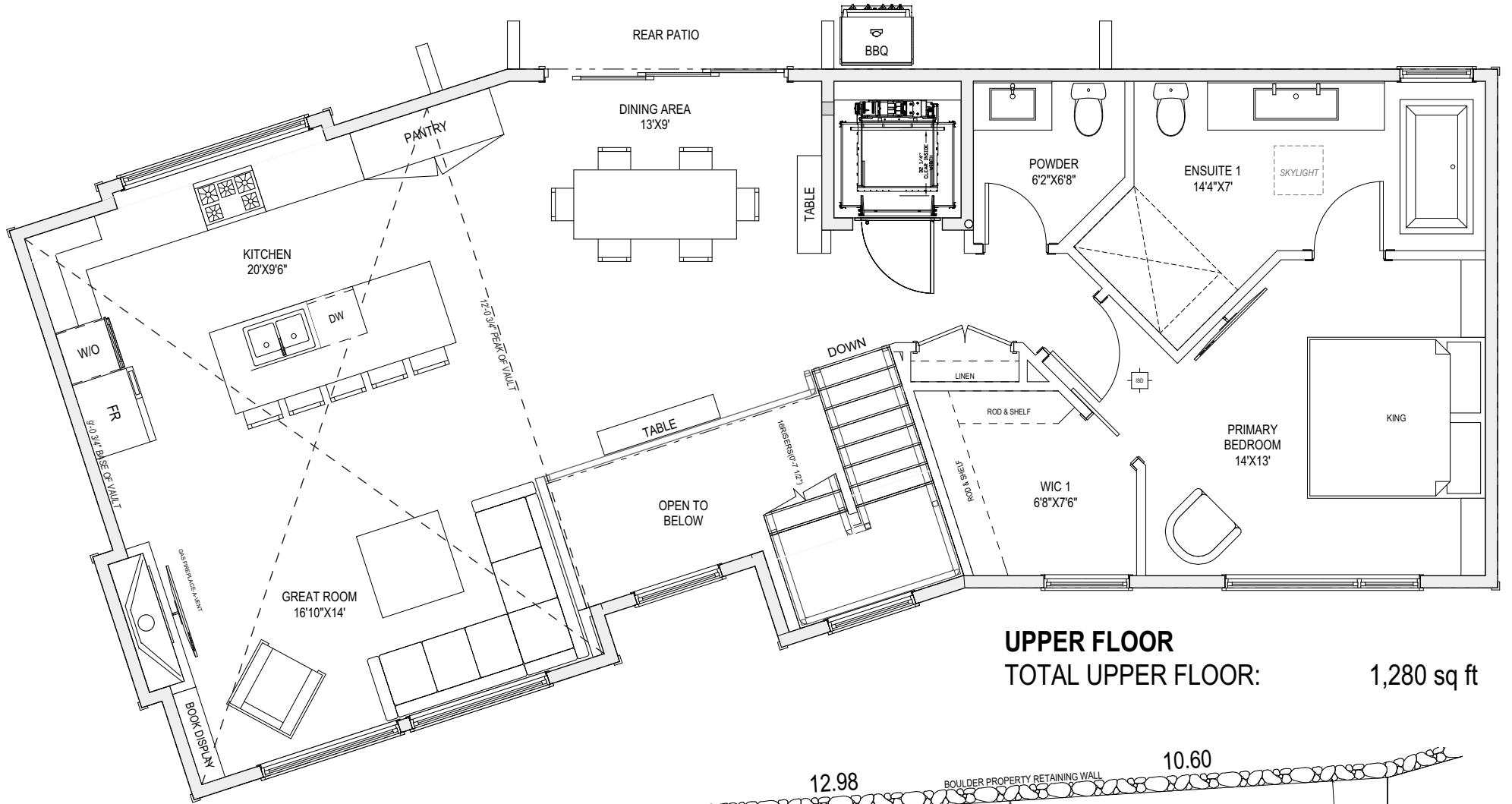
MECHANICAL ROOM: 34 sq ft

Initials			
Seller	Seller	Buyer	Buyer

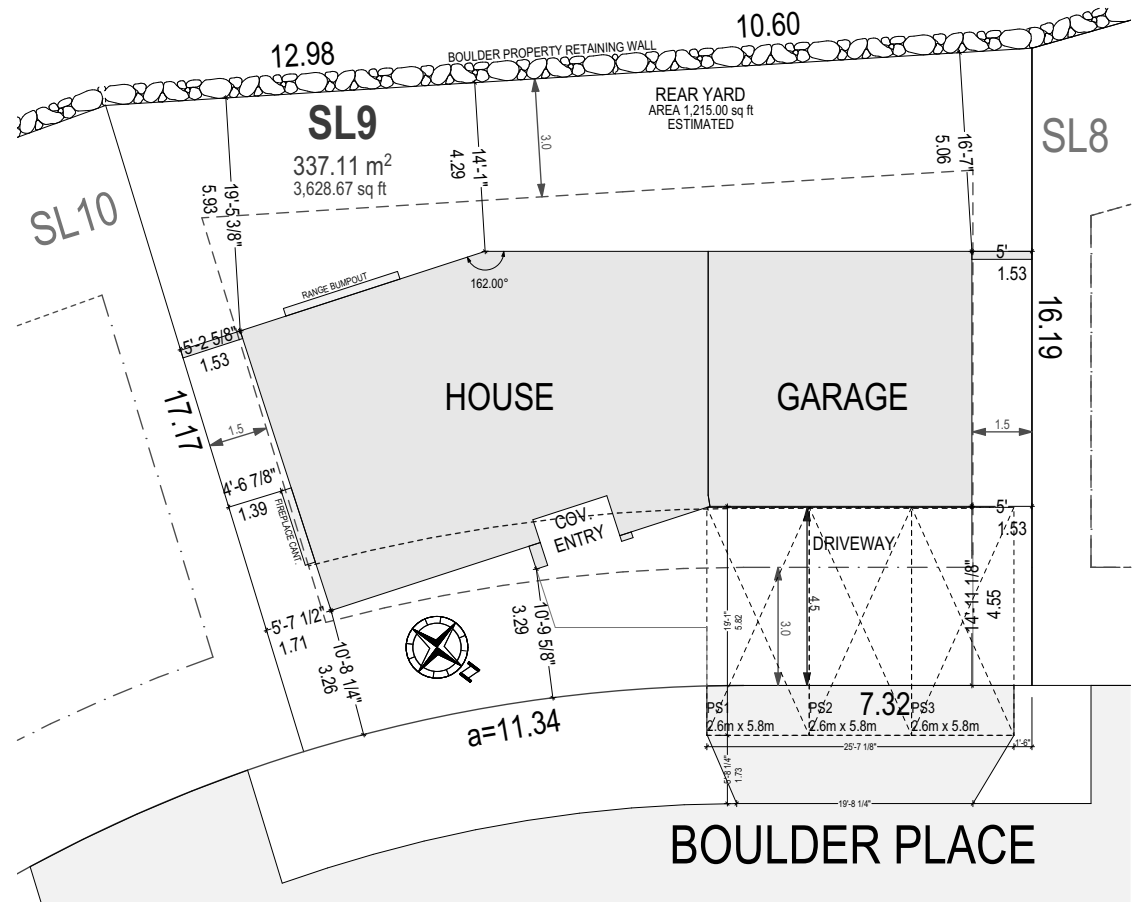
**NOTE: In the interest of maintaining high standards, the builder reserves the right to modify plans, specifications and design without prior notice. Drawings contained within are artist renderings only. Sizes and dimensions are approximate and may vary with actual plan and survey. Exterior style may change pending municipal approval.*

THE HEIGHTS

769 BOULDER PLACE 'Grayson' SL9



UPPER FLOOR
TOTAL UPPER FLOOR: 1,280 sq ft



PRELIMINARY SITE PLAN

LIVING AREA
TOTAL LIVING AREA: 3,396 sq ft

OTHER
GARAGE: 467 sq ft
MECHANICAL ROOM: 34 sq ft

Initials			
Seller	Seller	Buyer	Buyer

**NOTE: In the interest of maintaining high standards, the builder reserves the right to modify plans, specifications and design without prior notice. Drawings contained within are artist renderings only. Sizes and dimensions are approximate and may vary with actual plan and survey. Exterior style may change pending municipal approval.*