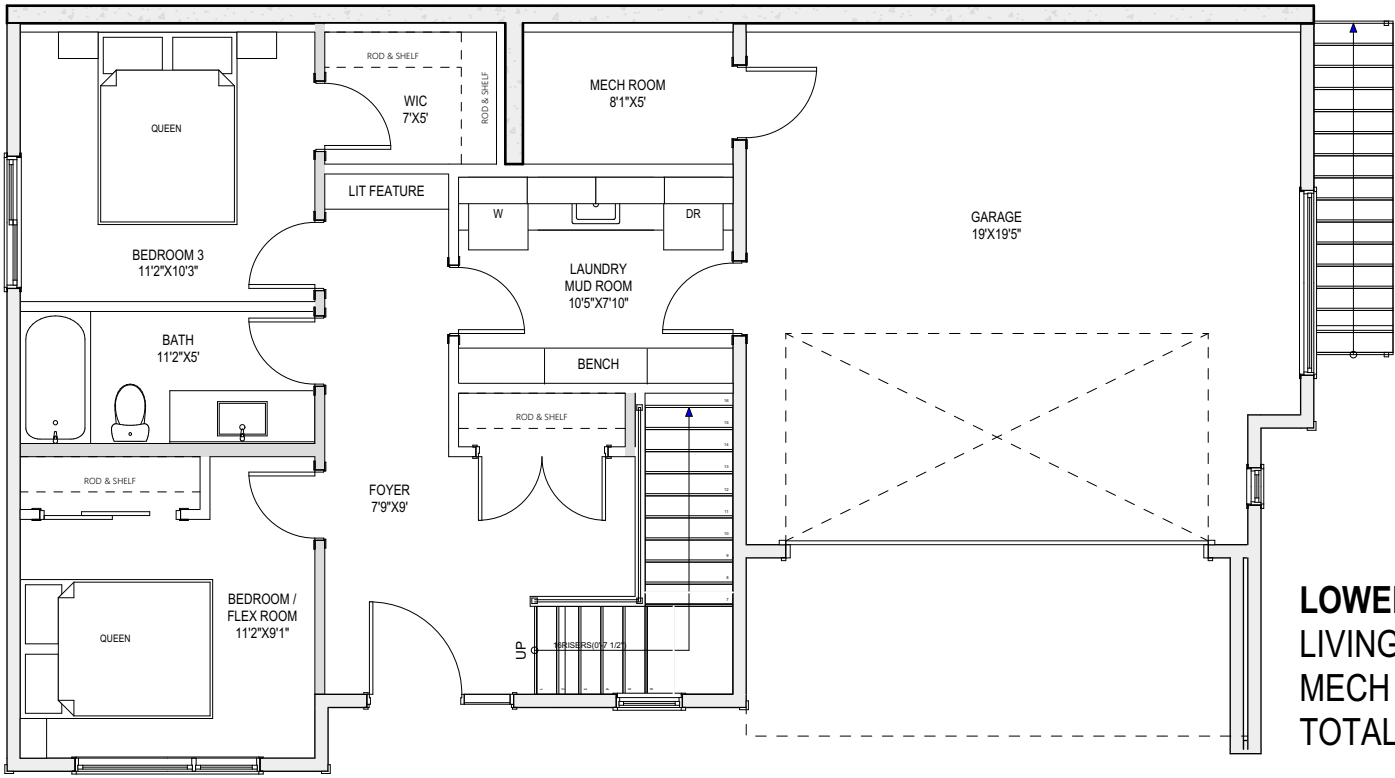


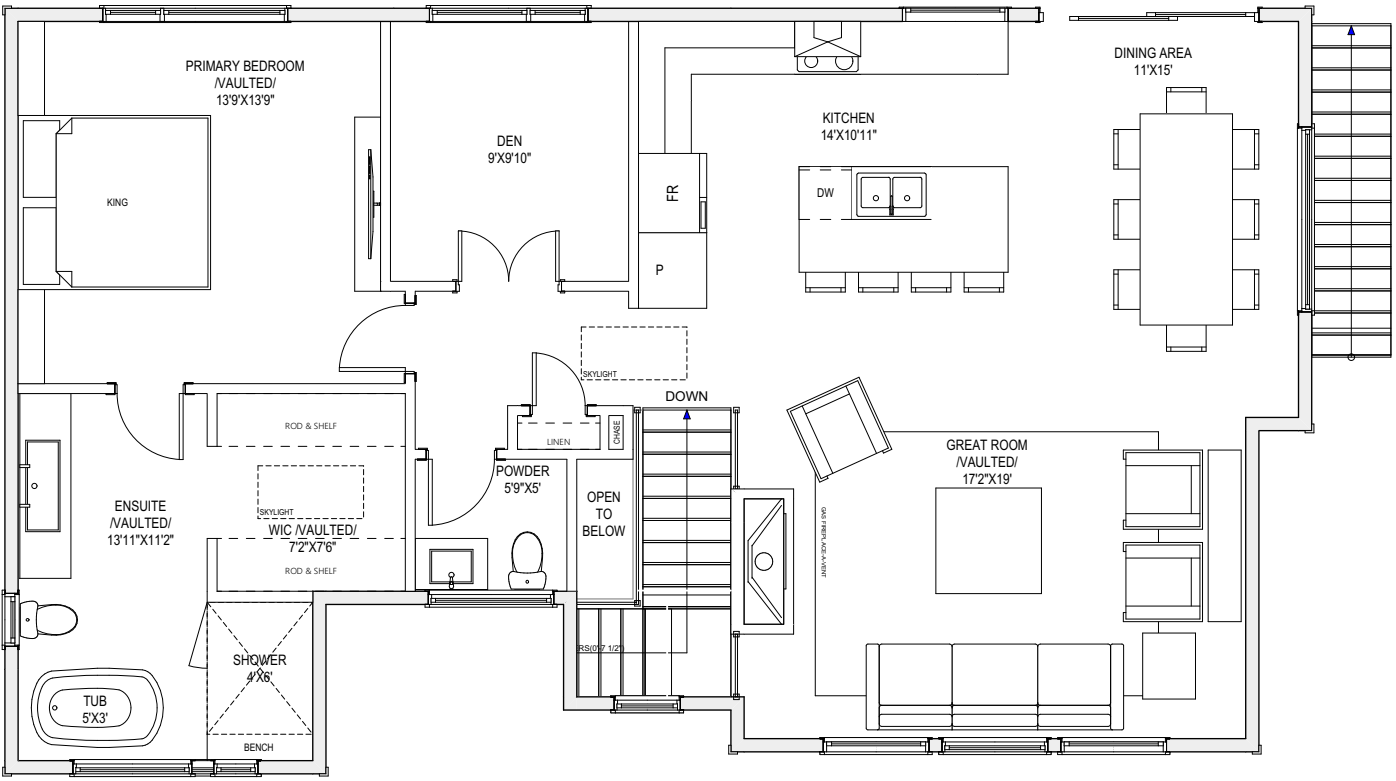


# THE HEIGHTS

## 761 BOULDER PLACE 'Windfield'



**LOWER FLOOR**  
 LIVING FLOOR AREA: 712 sq ft  
 MECH ROOM: 52 sq ft  
 TOTAL LOWER FLOOR: 764 sq ft



**MAIN FLOOR**  
 TOTAL MAIN FLOOR: 1,307 sq ft

**LIVING AREA**  
 TOTAL LIVING AREA: 2,019 sq ft

**OTHER**  
 GARAGE: 450 sq ft  
 MECH ROOM: 52 sq ft

Initials			
Seller	Seller	Buyer	Buyer

*\*NOTE: In the interest of maintaining high standards, the builder reserves the right to modify plans, specifications and design without prior notice. Drawings contained within are artist renderings only. Sizes and dimensions are approximate and may vary with actual plan and survey. Exterior style may change pending municipal approval.*

