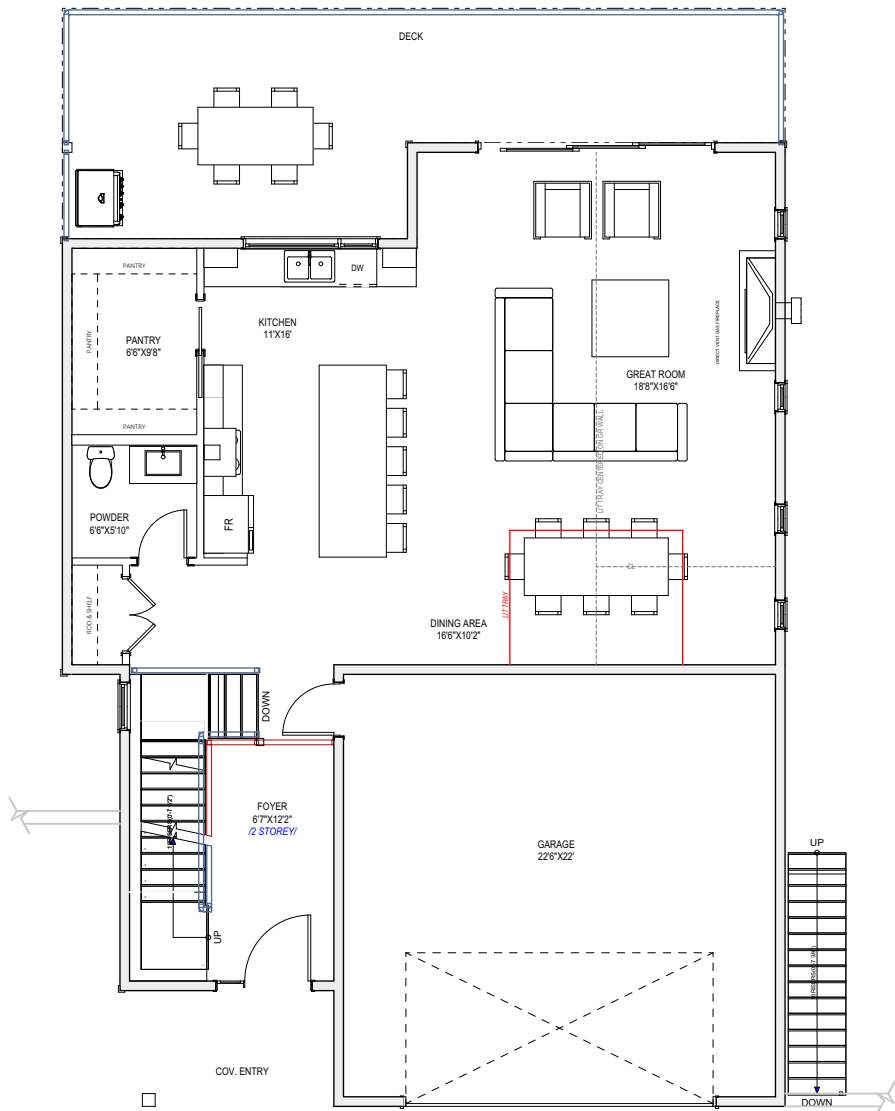


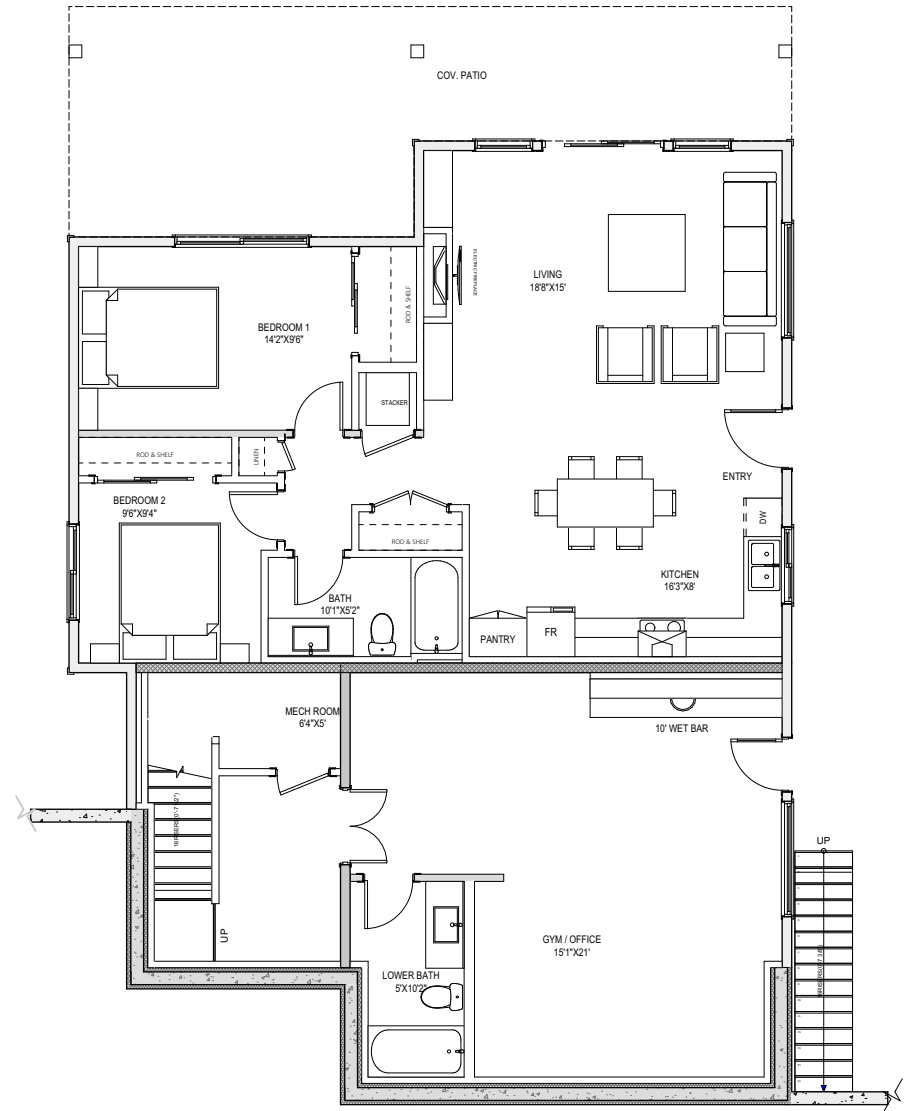
# THE HEIGHTS

## 788 BOULDER PLACE 'Nelson'



### MAIN FLOOR

LIVING FLOOR AREA: 1,124 sq ft  
GARAGE AREA: 541 sq ft

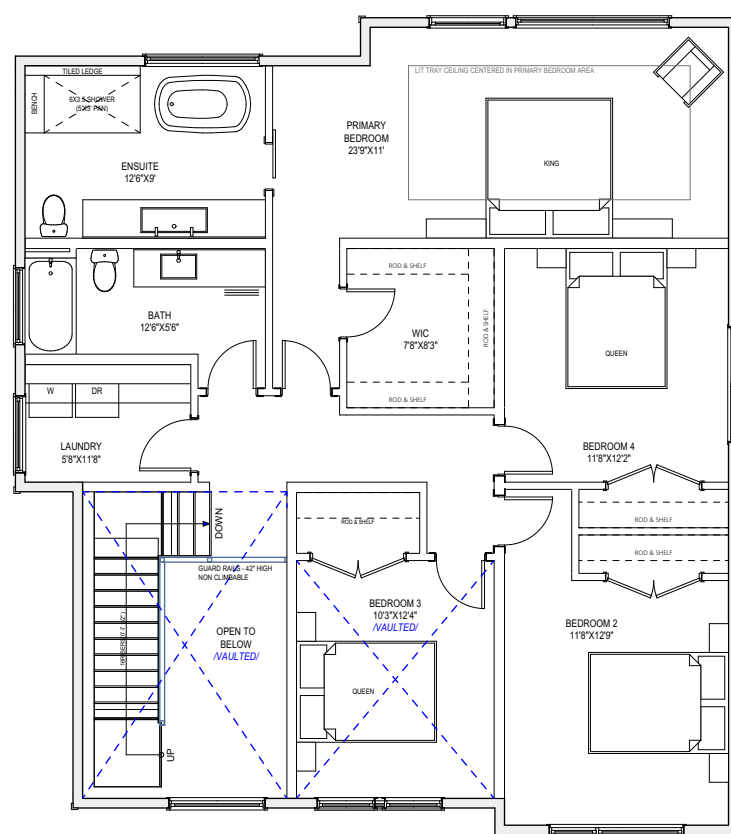


### LOWER FLOOR

PRIMARY LIVING FLOOR AREA: 712 sq ft  
SECONDARY SUITE AREA: 952 sq ft  
MECHANICAL ROOM: 34 sq ft  
TOTAL LIVING FLOOR AREA: 1,664 sq ft

**LIVING AREA**  
TOTAL LIVING AREA: 4,115 sq ft

**OTHER**  
GARAGE: 541 sq ft  
MECHANICAL ROOM: 34 sq ft



### UPPER FLOOR

LIVING FLOOR AREA: 1,327 sq ft

Initials			
Seller	Seller	Buyer	Buyer

*\*NOTE: In the interest of maintaining high standards, the builder reserves the right to modify plans, specifications and design without prior notice. Drawings contained within are artist renderings only. Sizes and dimensions are approximate and may vary with actual plan and survey. Exterior style may change pending municipal approval.*



**CARMA**  
DESIGN GROUP

© 2023 CARMA DESIGN GROUP INC.